

NORTH WINNETKA

50' R.O.W.

EXIST. CONC. APPROACH

POWER POLE

CONC. SIDEWALK

EX 6" WATER

EX 6" SANITARY SEWER

**PARKING ANALYSIS**

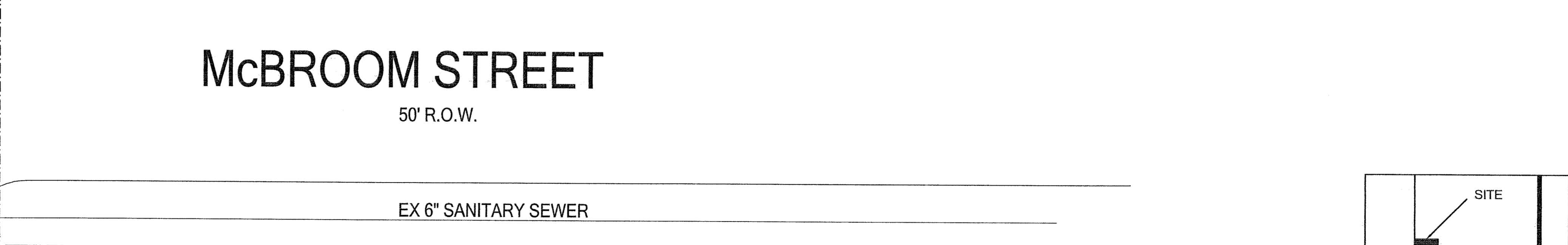
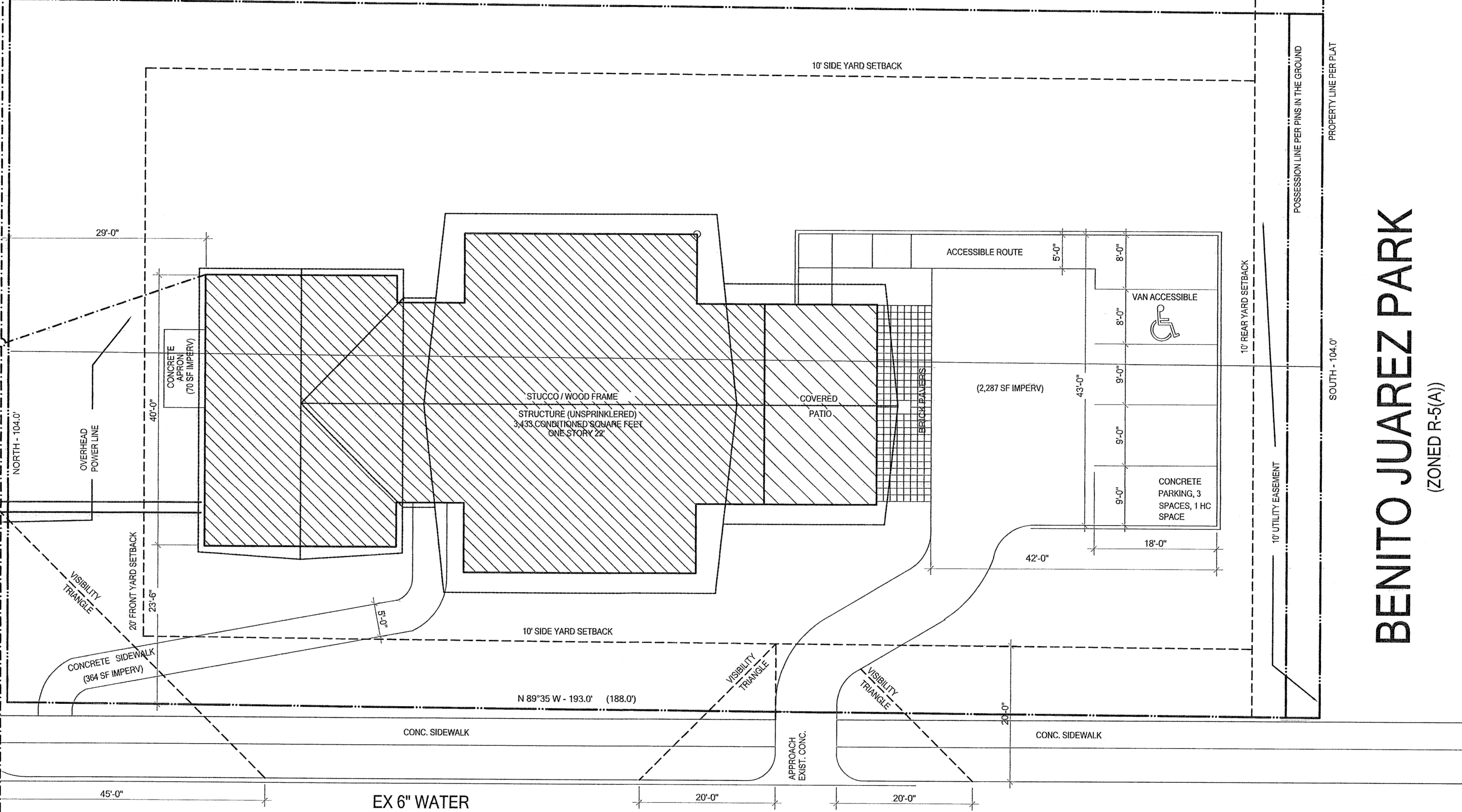
Child Day Care Use, 3,433 s.f.  
 Off Street Parking required, @ 1 space per 500 s.f.: 7 spaces  
 Off Street Parking provided: 4 spaces

Open Enrollment Charter School  
 Off Street Parking required: 3 Classrooms @ 1.5 spaces per classroom: 5 spaces  
 Off Street Parking provided: 4 spaces

**IMPERVIOUS PAVEMENT ANALYSIS**

Parking and Drive 2,287 s.f.  
 Sidewalk to Front Door 364 s.f.  
 Stoop at West Door 70 s.f.  
**TOTAL 2,721 s.f.**

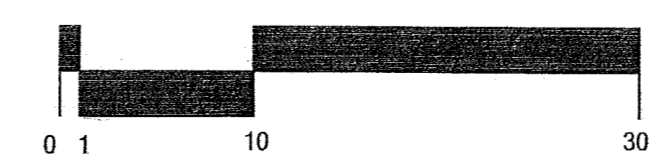
(ZONED R-5(A))  
 S 89°35' E - 193.0' (188.0')



BENITO JUAREZ PARK  
 (ZONED R-5(A))

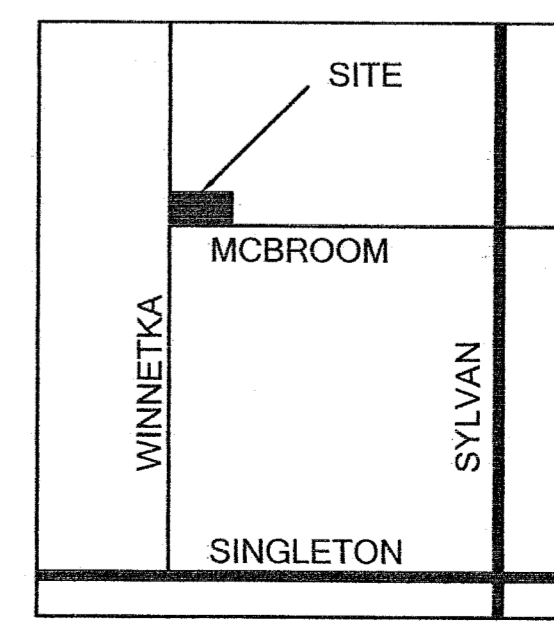
McBROOM STREET

50' R.O.W.

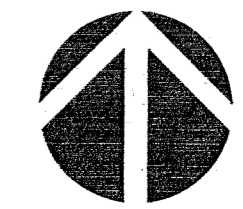


**01 SITE PLAN**

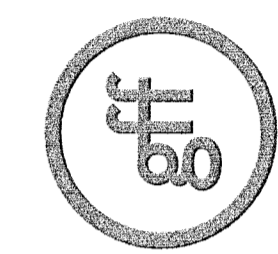
File Name: A-SITE-SUP.dwg Scale: 1" = 10'



VICINITY MAP



**Good Fulton & Farrell Architects**  
 2808 Fairmount Street  
 Suite 300  
 Dallas, Texas 75201  
 214-303-1500/Tel  
 214-303-1512/Fax  
 www.gff.com  
 © Good Fulton & Farrell 2013



REVISIONS		
No.	Date	Item

**SARAH WILKE CENTER**  
 3326 N. WINNETKA AVENUE  
 DALLAS, TEXAS 75212

Drawn	MSB	
Checked	MSB	
MSB		
Approved	MSB	

**SUP SITE PLAN**

Project No. 15099.00  
 Date 05.18.15

A0.01

7156-214 (0TH)